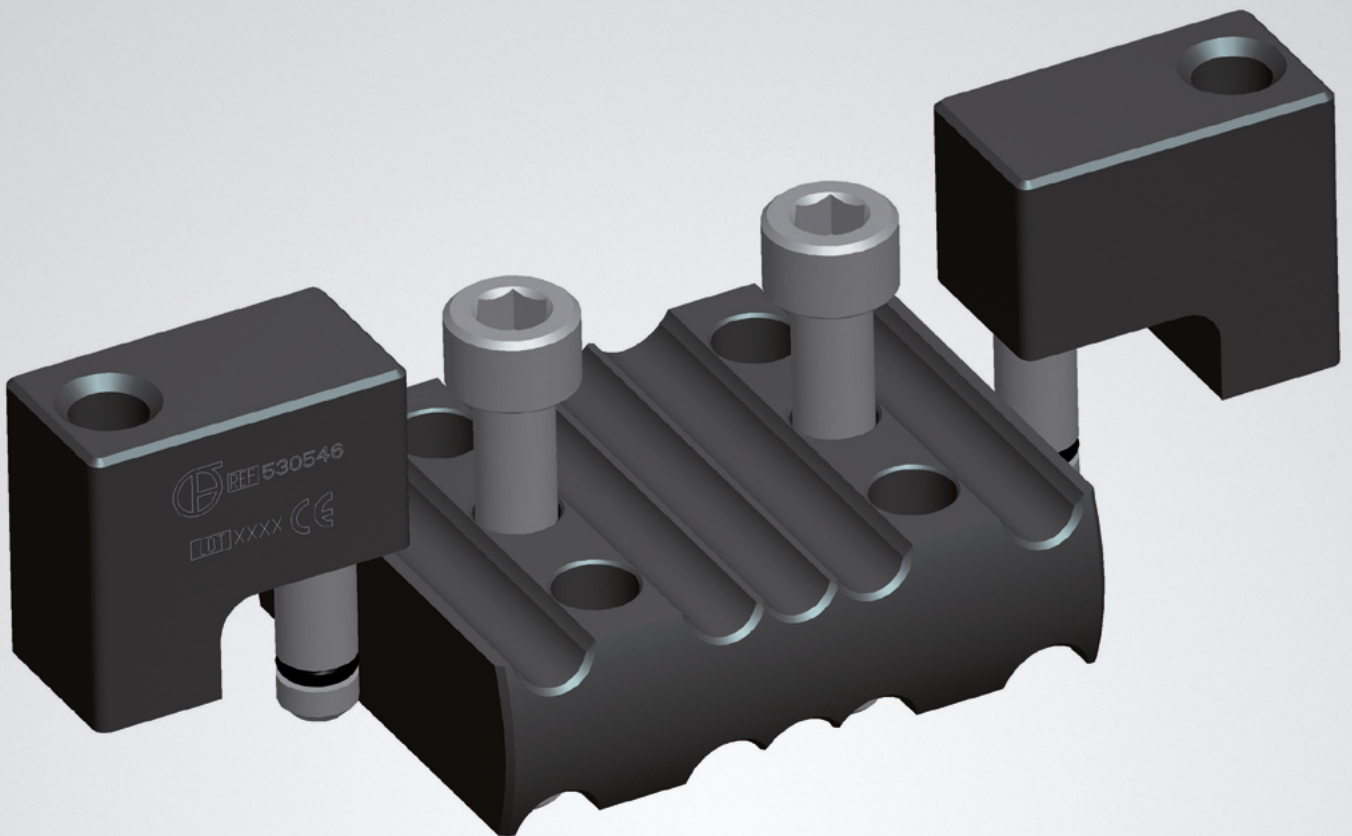


QUICK REFERENCE GUIDE

LRS Advanced™

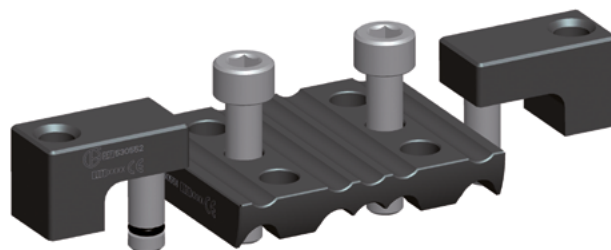
Limb Reconstruction System



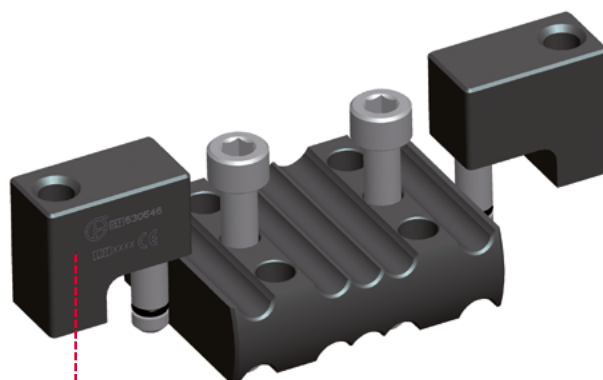
Please kindly refer to the product IFU PQREC, to the Orthofix implantable devices and related instrument IFU PQSCR, and to the reusable medical devices IFU PQRMD that contain instructions for use of the product.

LRS ADVanced Sandwich Clamp

53548 LRS ADVanced Sandwich Clamp, height: 8 mm

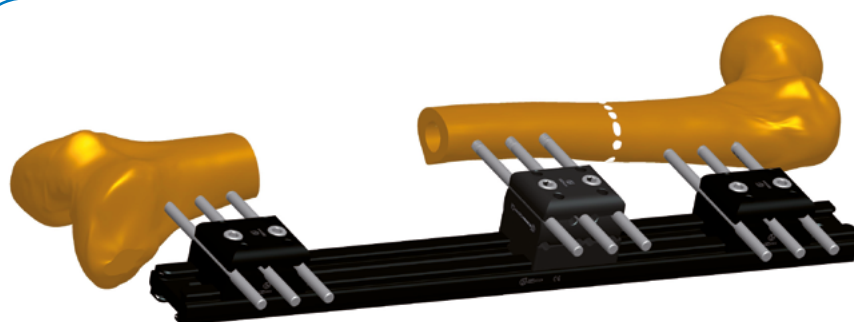


53547 LRS ADVanced Sandwich Clamp, height: 15 mm

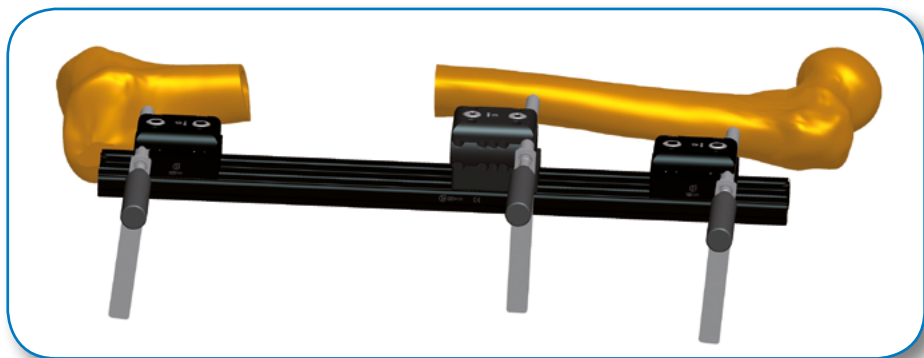


Compression-Distraction Unit Attachment

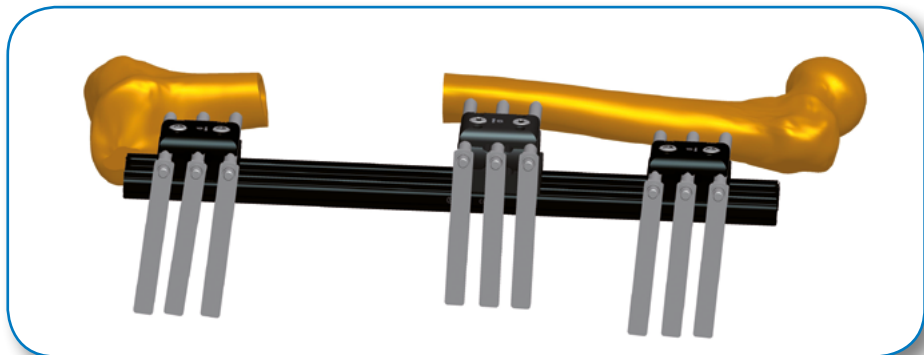
The Sandwich Clamp is inserted between the base and the cover of a LRS ADV Straight Clamp to raise the position of screw insertion above the rail. Two models of Sandwich Clamp are available; selection depends on the displacement caused by the curvature of the femur: 8 mm (53548) and 15 mm (53547). This clamp is useful when the femur is curved, to allow placement of screws in the middle clamp in the center of the bone. It is used with longer clamp locking screws to allow fixation to the rail. Extension pieces (compression-distraction unit attachments) for the seating of the compression-distraction modules are provided.



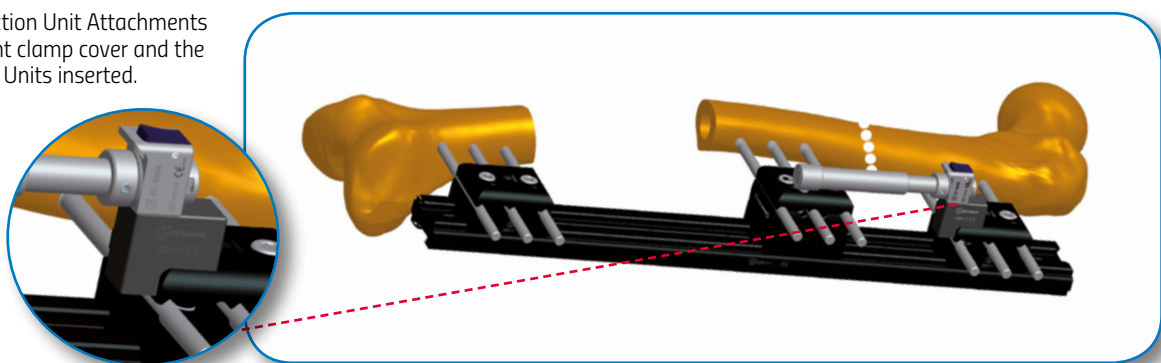
With the assistant holding the distal clamp firmly in place, the surgeon checks that satisfactory screw insertions can be achieved at chosen sites in the proximal, distal and central clamps.



Once this has been achieved, the rail is held in position while the screws are inserted using the standard technique.



The Compression-Distraction Unit Attachments are applied on the straight clamp cover and the Compression-Distraction Units inserted.



Please refer to the "Instructions for Use" supplied with the product for specific information on indications for use, contraindications, warnings, precautions, adverse reactions and sterilization.

Electronic Instructions for use available at the website <http://ifu.orthofix.it>

Electronic Instructions for use - Minimum requirements for consultation:

- Internet connection (56 Kbit/s)
- Device capable to visualize PDF (ISO/IEC 32000-1) files
- Disk space: 50 Mbytes

Free paper copy can be requested from customer service (delivery within 7 days):

tel +39 045 6719301, fax +39 045 6719370,

e-mail: customerservice@orthofix.it

Caution: Federal law (USA) restricts this device to sale by or on the order of a physician. Proper surgical procedure is the responsibility of the medical professional. Operative techniques are furnished as an informative guideline. Each surgeon must evaluate the appropriateness of a technique based on his or her personal medical credentials and experience.



Manufactured by:
ORTHOFIX Srl
Via Delle Nazioni 9, 37012 Bussolengo
(Verona), Italy
Telephone +39 045 6719000,
Fax +39 045 6719380
www.orthofix.com

Rx Only

CE 0123

Distributed by:

