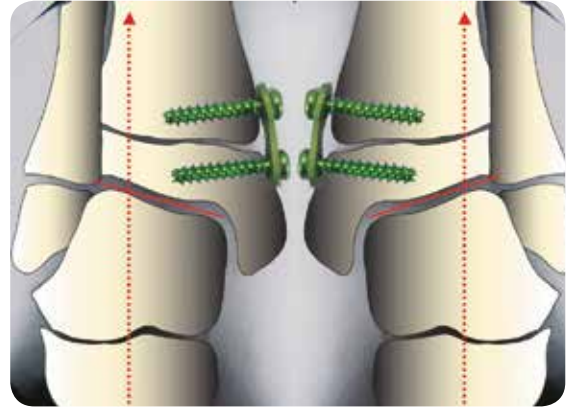
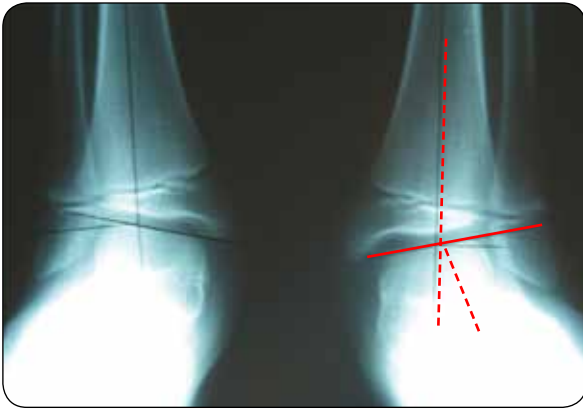


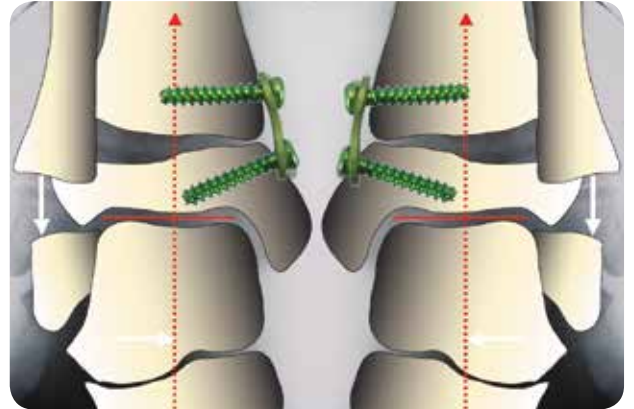
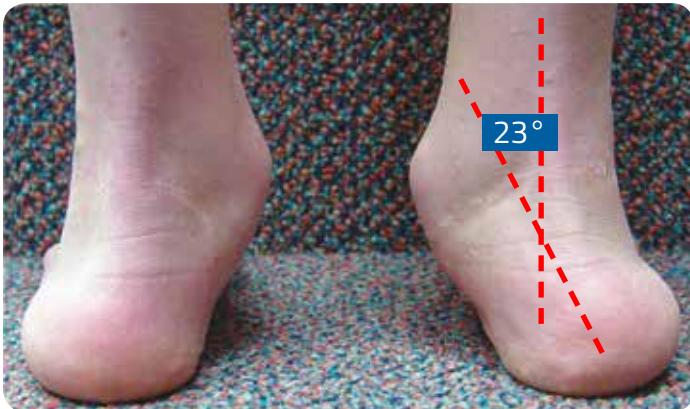
Developmental or Neurological Ankle Valgus

Case study provided by Peter M. Stevens, M.D., University of Utah

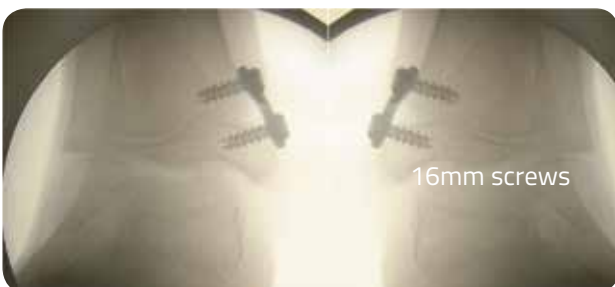


Conditions Including:

- Cerebral Palsy
- Spina Bifida
- Down's Syndrome
- Multiple Epiphyseal Dysplasia
- Congenital Clubfoot
- Ball & Socket Ankle



6 yrs. after Posteromedial Release for TEV



12mm plates with 16mm screws



Diverging screws function like a hinge, avoiding physis compression.

Operative Brief



1. Insert K-wire in physis and verify position with fluoroscope.



2. Apply conformed eight-Plate over K-wire.



3. Insert two K-wires: one into the epiphysis and one in the metaphysis.



4. Drill only to 5mm depth with the 3.2mm cannulated drill bit and insert 16mm or 24mm eight-Plate Guided Growth Screws.

Operative brief and case studies provided by Peter M. Stevens, M.D., University of Utah

Hemi-Epiphysiodesis and Guided Growth References

- Hemi-Epiphysiodesis for Deformity Management
P. Stevens, Abstract, IPOS, Orlando, FL, USA, 12/03/2005
- Hypophosphatemic Rickets: The Role of Hemi-epiphysiodesis
E. Novais, MD and P. Stevens, MD, J. Pediatr. Orthop., Vol. 26, No. 2, March/April 2006
- Hemiepiphysiodesis for Posttraumatic Tibial Valgus
P. Stevens, Felicity Pease, J. Pediatr. Orthop., Vol. 26, No. 3, May/June 2006
- Guided Growth for Angular Correction
Peter Stevens, Abstract, POSNA, San Diego, CA, USA, May 3-6, 2006
- Hemi-epiphysiodesis: 2006. Rationale, Technique. Applications.
P. Stevens, Abstract, IPOS No. 3, Orlando, Florida, November 2006
- Guided Growth for Angular Correction: A Preliminary Series Using a Tension Band Plate
P. Stevens, J. Pediatr. Orthop., Vold. 27 (3), April/May 2007
- Eight Plate for Temporary Hemiepiphysiodesis to Correct Angular Deformities
J.E. Herzenberg, R. Burhardt, D. Paley, S. Standard Abstract (104), J. Child Orthop, Vol. 1 Suppl. 1. March 2007

Distributed by:



Manufactured by:
ORTHOFIX Srl
Via Delle Nazioni 9, 37012 Bussolengo (Verona), Italy
Telephone +39 045 6719000, Fax +39 045 6719380

CE 0123

www.orthofix.com

EP-0607.3-PL-E0 D 09/15

Indications

The eight-Plate is indicated for any angular deformity in a growing child/adolescent who would otherwise require an osteotomy.

Contraindications

The eight-Plate should not be used for adult deformities or where the growth plate has closed because of trauma, infection or skeletal maturity.



Instructions for Use: See actual package insert for Instructions for Use.

Caution: Federal law (USA) restricts this device to sale by or on the order of a physician. Proper surgical procedure is the responsibility of the medical professional. Operative techniques are furnished as an informative guideline. Each surgeon must evaluate the appropriateness of a technique based on his or her personal medical credentials and experience. Please refer to the "Instructions for Use" supplied with the product for specific information on indications for use, contraindications, warnings, precautions, adverse reactions and sterilization.


ORTHOFIX®