

# Developmental Neurologic Fixed Knee Flexion

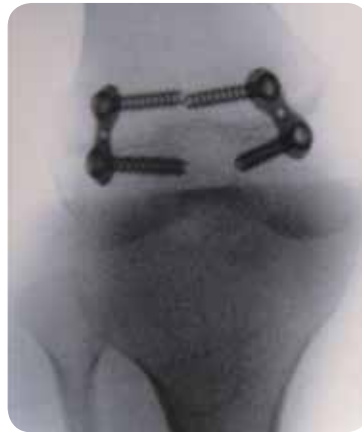
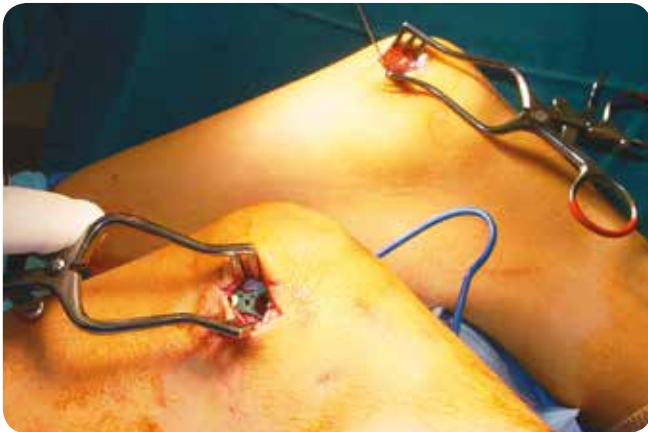
Case study provided by Peter M. Stevens, M.D., University of Utah



Conditions including:

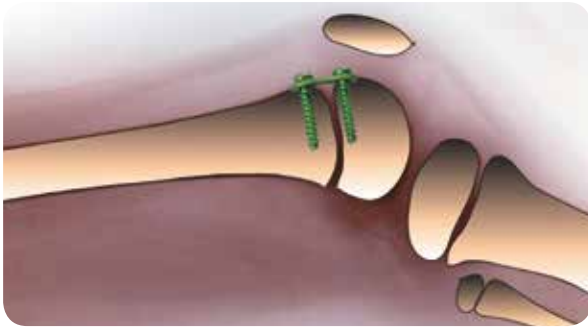
- Cerebral Palsy
- Spina Bifida
- Arthrogryposis
- Genetic syndromes

2 Anterior Plates:  
Intra-Synovial but Non-Articular = Each Side of Sulcus

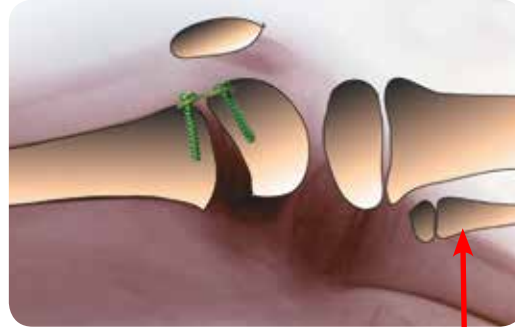




Congenital Arthrogyrosis 25° to 0° In 6 Months



Immediate ROM and Weight Bearing Bracing as Indicated



No Interruption of Therapy

### Hemi-Epiphysiodesis and Guided Growth References

- Hemi-Epiphysiodesis for Deformity Management  
P. Stevens, Abstract, IPOS, Orlando, FL, USA, 12/03/2005
- Hypophosphatemic Rickets: The Role of Hemi-epiphysiodesis  
E. Novais, MD and P. Stevens, MD, J. Pediatr. Orthop., Vol. 26, No. 2, March/April 2006
- Hemiepiphysiodesis for Posttraumatic Tibial Valgus  
P. Stevens, Felicity Pease, J. Pediatr. Orthop., Vol. 26, No. 3, May/June 2006
- Guided Growth for Angular Correction  
Peter Stevens, Abstract, POSNA, San Diego, CA, USA, May 3-6, 2006
- Hemi-epiphysiodesis: 2006. Rationale, Technique. Applications.  
P. Stevens, Abstract, IPOS No. 3, Orlando, Florida, November 2006
- Guided Growth for Angular Correction: A Preliminary Series Using a Tension Band Plate  
P. Stevens, J. Pediatr. Orthop., Vold. 27 (3), April/May 2007
- Eight Plate for Temporary Hemiepiphysiodesis to Correct Angular Deformities  
J.E. Herzenberg, R. Burhardt, D. Paley, S. Standard Abstract (104), J. Child Orthop, Vol. 1 Suppl. 1, March 2007

### Indications

The eight-Plate is indicated for any angular deformity in a growing child/adolescent who would otherwise require an osteotomy.

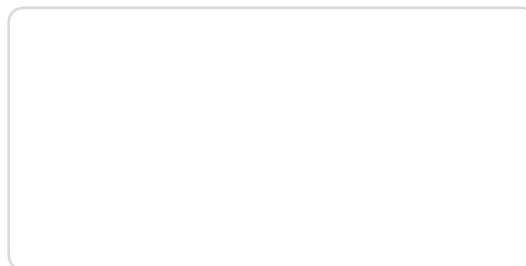
### Contraindications

The eight-Plate should not be used for adult deformities or where the growth plate has closed because of trauma, infection or skeletal maturity.

Distributed by:



Manufactured by:  
ORTHOFIX Srl  
Via Delle Nazioni 9, 37012 Bussolengo (Verona), Italy  
Telephone +39 045 6719000, Fax +39 045 6719380



Instructions for Use: See actual package insert for Instructions for Use.

Caution: Federal law (USA) restricts this device to sale by or on the order of a physician. Proper surgical procedure is the responsibility of the medical professional. Operative techniques are furnished as an informative guideline. Each surgeon must evaluate the appropriateness of a technique based on his or her personal medical credentials and experience. Please refer to the "Instructions for Use" supplied with the product for specific information on indications for use, contraindications, warnings, precautions, adverse reactions and sterilization.

[www.orthofix.com](http://www.orthofix.com)

