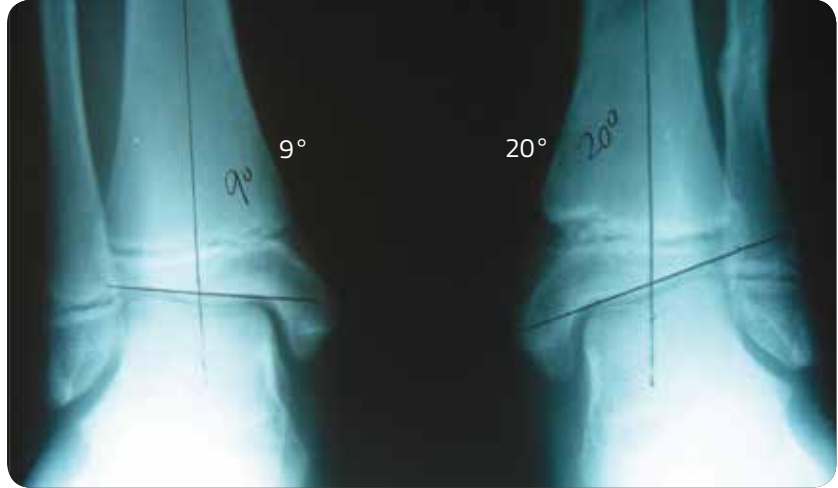


Ankle Valgus after Left Ankle Fracture

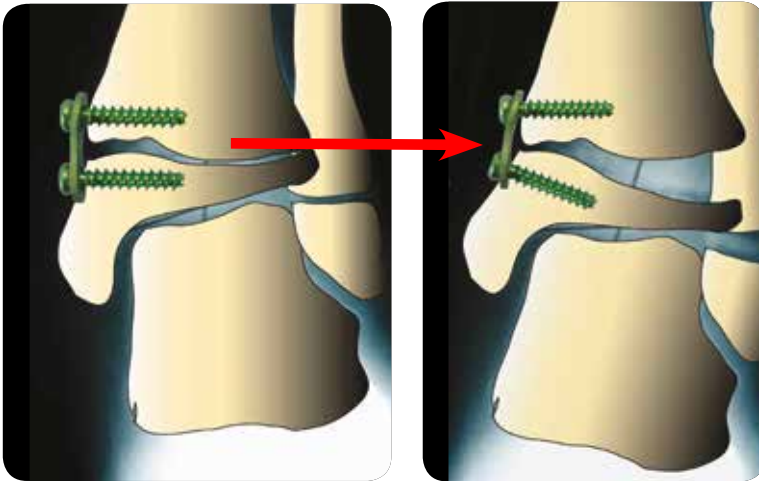
Case study provided by Peter M. Stevens, M.D., University of Utah



12 Yr. Old Boy
Closed Reduction
Cast x 6 Weeks



Healed Fracture
20° Ankle Valgus



Diverging screws function
like a hinge, avoiding
physis compression





4 Months post-op
Guided Growth



6 Months post-op
Guided Growth



7 Months post-op
eight-Plate removed



Hemi-Epiphysiodesis and Guided Growth References

- Hemi-Epiphysiodesis for Deformity Management
P. Stevens, Abstract, IPOS, Orlando, FL, USA, 12/03/2005
- Hypophosphatemic Rickets: The Role of Hemi-epiphysiodesis
E. Novais, MD and P. Stevens, MD, J. Pediatr. Orthop.,
Vol. 26, No. 2, March/April 2006
- Hemiepiphysiodesis for Posttraumatic Tibial Valgus
P. Stevens, Felicity Pease, J. Pediatr. Orthop.,
Vol. 26, No. 3, May/June 2006
- Guided Growth for Angular Correction Peter Stevens, Abstract, POSNA,
San Diego, CA, USA, May 3-6, 2006
- Hemi-epiphysiodesis: 2006. Rationale, Technique. Applications.
P. Stevens, Abstract, IPOS No. 3, Orlando, Florida, November 2006
- Guided Growth for Angular Correction: A Preliminary Series Using a
Tension Band Plate P. Stevens, J. Pediatr. Orthop., Vold. 27 (3),
April/May 2007
- Eight Plate for Temporary Hemiepiphysiodesis to Correct Angular
Deformities J.E. Herzenberg, R. Burhardt, D. Paley, S. Standard
Abstract (104), J. Child Orthop, Vol. 1 Suppl. 1, March 2007

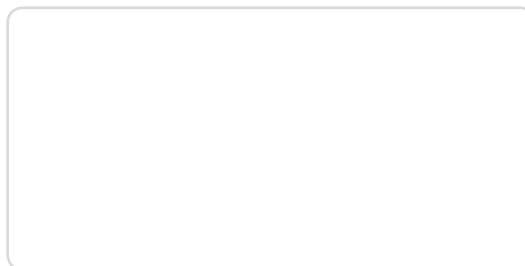
Indications

The eight-Plate is indicated for any angular deformity in a growing child/adolescent who would otherwise require an osteotomy.

Contraindications

The eight-Plate should not be used for adult deformities or where the growth plate has closed because of trauma, infection or skeletal maturity.

Distributed by:



Manufactured by:
ORTHOFIX Srl
Via Delle Nazioni 9, 37012 Bussolengo (Verona), Italy
Telephone +39 045 6719000, Fax +39 045 6719380

CE 0123



Instructions for Use: See actual package insert for Instructions for Use.

Caution: Federal law (USA) restricts this device to sale by or on the order of a physician. Proper surgical procedure is the responsibility of the medical professional. Operative techniques are furnished as an informative guideline. Each surgeon must evaluate the appropriateness of a technique based on his or her personal medical credentials and experience. Please refer to the "Instructions for Use" supplied with the product for specific information on indications for use, contraindications, warnings, precautions, adverse reactions and sterilization.

www.orthofix.com

